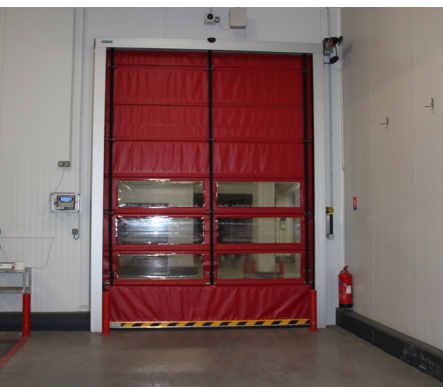


# RAPID FOLD UP DOORS

**DURABLE FULLY ENGINEERED RAPID FOLD UP DOOR DESIGNED FOR INTERIOR AMBIENT, CHILL AND FREEZER APPLICATIONS**



## TECHNICAL & SPECIFICATION

### FRAME

- Anodised aluminium guides with nylon brush seals and stainless steel components
- Guide complete with integrated photoelectric cell

### DOOR LEAF

- Robust construction high resistance polyester door curtain
- Wind-resistant class 3 rating reduces draughts minimising temperature loss
- M2 non-flammable coating on PVC colour - variety of colours available
- Safety edge
- Maximum clear opening height 6.5m and width 6m

### ADDITIONAL OPTIONS AVAILABLE

- Digital door position control
- Motorised rapid fold-up door approx. 0.6m/s
- Suitable for both interior and exterior
- Low noise gear assembly
- Facilitates flow of traffic
- Electronic end-of-travel sensors
- Safety breaking mechanism
- Exterior and interior emergency stop buttons

SALES HOTLINE  
**01525 406666**

